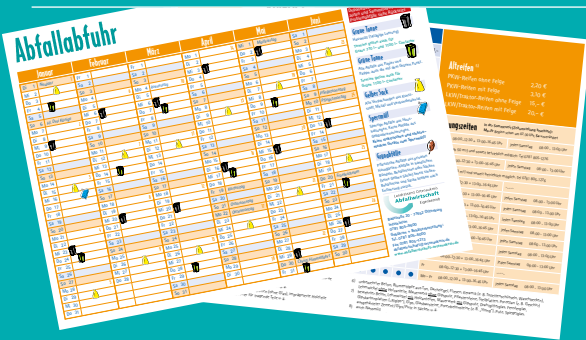




Waste disposal in the Ortenaukreis

How does it work?

Waste collection calendar



Each year we issue a waste collection calendar with important information on its reverse side.

WHAT DOES IT INCLUDE?

- All collection dates for the grey bin, the green bin and the yellow bag
- Dates for the collection of bulky waste and green waste
- Dates for the collection of problematic waste
- Information on the collection stations

GOOD TO KNOW

The collection calendars are given out once per year. You can also ask for the collection calendars in the townhall.

All collection calendars are also available on the Internet at: www.abfallwirtschaft-ortenaukreis.de
You can download all collection calendars on smartphone, tablet and PC using iCalendar format.

COLLECTION CALENDAR PAGE 2

GREY BIN PAGE 4

GREEN BIN PAGE 6

YELLOW BAG PAGE 8

GLASS COLLECTION CONTAINER PAGE 10

BULKY WASTE PAGE 12

GREEN WASTE PAGE 14

PROBLEMATIC WASTE PAGE 16

COLLECTION STATIONS PAGE 18

Grey bin

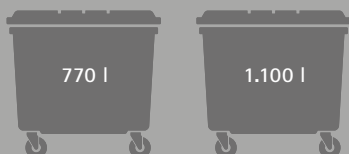
THE BIN FOR RESIDUAL HOUSEHOLD WASTE

DIFFERENT SIZES

There are bins in different sizes



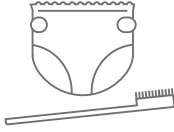
or waste containers in two sizes
with the price depending on the size.



WHAT GOES IN THERE?



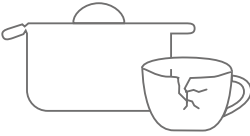
Rubbish



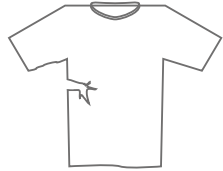
Hygiene products,
nappies



Kitchen refuse,
food waste



Broken tableware



Damaged clothes

COLLECTION DATES OF THE GREY BIN

The grey bin waste is collected every two weeks.
The collection dates are included in the
collection calendar.



Put the bin out on the collection day
in the morning before 6:00 a.m.
at the roadside/pavement with the lid closed.

GOOD TO KNOW

If it gets more than can be disposed of in the bin:
you can buy an additional red waste bag in the
townhall or in the administrative district office
(Landratsamt) in Offenburg.

Besides the additional red waste bag
nothing else is allowed to be placed
beside the grey bin.



Green bin

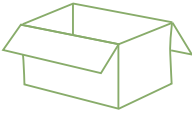
THE PAPER COLLECTION BIN

ONE SIZE ONLY

The green bin is available in one size only - it is free of charge.



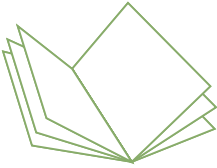
WHAT GOES IN THERE?



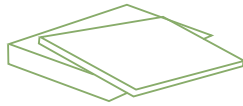
Cardboard packagings
and boxes



Books and
booklets



Newspapers, magazines



Empty pizza boxes,
paper packagings

COLLECTION DATES OF THE GREEN BIN

The green waste is collected every three weeks.
The collection dates are included in
the collection calendar.



Put the bin out on the collection day
in the morning before 6:00 a.m.
at the roadside/pavement with the lid closed.

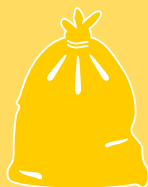
GOOD TO KNOW

If the bin is full, you may, as an exception, put paper and
cardboard beside the bin.

Yellow bag

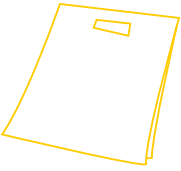
WHERE DO YOU GET THE YELLOW BAGS?

The yellow bags are given out once per year. Should you need further ones you can get them both in the townhall or at the administrative district office (Landratsamt) in Offenburg.

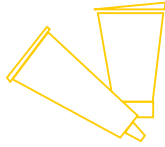


WHAT GOES IN THERE?

Packaging waste of metal,
plastic materials or composite materials



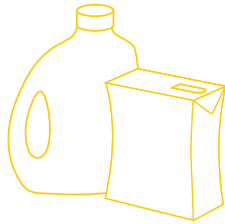
Plastic bags



Tubes and packagings



Cans and tins



Cleaning agent containers,
tetrapacks

COLLECTION DATES OF THE YELLOW BAG

The yellow bags are collected every two weeks.
The collection dates are included in the
collection calendar.

Put them out on the collection day
in the morning before 6:00 a.m.
at the roadside/pavement.



GOOD TO KNOW

Only packaging material waste goes into the yellow bag.
Plastic or metal waste which is not packaging material
do not go in the yellow bag.

Glass collection container

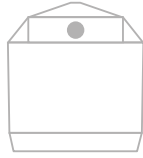
WHERE TO FIND GLASS COLLECTION CONTAINERS

The glass collection containers are to be found at many places.

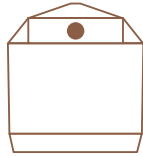
WHICH GLASS GOES IN WHICH CONTAINER?



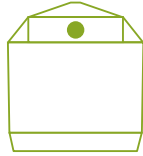
White glasses and bottles go into the one for white glass



Brown glasses and bottles go into the one for brown glass



Green and different-coloured (e.g. red ones) glasses and bottles go into the one for green glass



THROW IN TIMES FOR GLASS

Throw in times are from
Monday - Saturday
from 7:00 a.m. until 08:00 p.m.

Please do not throw in glass
on Sundays and public holidays.



GOOD TO KNOW

Flat glass (mirror or window glass), light bulbs, glassware, china, pottery and earthenware must not be disposed of in the glass container.

Bulky waste

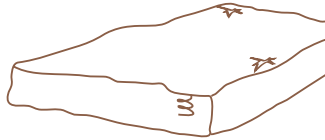
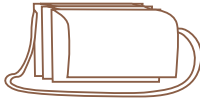
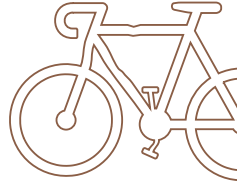
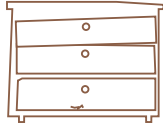
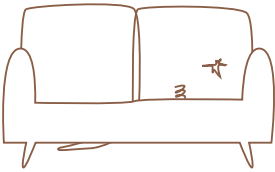
WHERE TO DISPOSE IT?

Bulky waste is collected in a street collection once per year.

WHAT IS INCLUDED?

Bulky waste means big pieces of household waste which cannot be disposed of in the dustbin.

Individual pieces of waste with a maximum weight of 50 kg and a maximum width of 1.50 m.



BULKY WASTE COLLECTION

Bulky waste is collected once per year. The collection date is included in the collection calendar.

Put the waste out on the collection day in the morning before 6:00 a.m. at the roadside/ pavement.



GOOD TO KNOW

Bulky waste can also be disposed of free of charge throughout the year at most of the collection stations.

Green waste

WHERE TO DISPOSE IT?

Once a year there is a street collection for green waste.

WHAT IS CONSIDERED?



Greenery



Plants and
perennials



Thin branches



Hedge trimmings

Bundles of a maximum length of 2 m,
with a maximum branch diameter of 15 cm.

COLLECTION DATES FOR GREEN WASTE

Green waste is collected once per year.
The date is included in the waste calendar.

Put the waste out on the collection day
in the morning before 6:00 a.m.
Place it in bundles or in open vessels
at the roadside.



GOOD TO KNOW

In addition, most of the collection stations, composting
plants and collecting points of the municipalities accept
green waste throughout the year free of charge.

Problematic waste

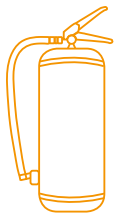
WHERE TO DISPOSE IT?

Problematic waste can be disposed of at the hazardous waste truck.

WHAT IS IT?



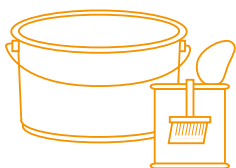
Energy-saving bulbs
LED-lamps and
fluorescent tubes



Fire extinguishers,
batteries



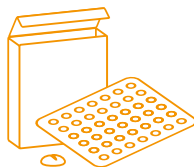
Motor and
cooking oils



Paint buckets,
varnish and solvent
cans with residues



Aerosol spray cans
with residues



Drugs

AVAILABILITY OF THE HAZARDOUS WASTE TRUCK

The hazardous waste truck goes to many municipalities in the Ortenaukreis (Ortenau district).

All dates are included on the reverse side of the waste calendar.

GOOD TO KNOW

The disposal of problematic household waste is free of charge. The company Remondis, Salmengrundstraße 4 in Rheinau-Freistett accepts your problematic waste throughout the year. Receiving hours:
Thursday 8:00 - 11:00 a.m. and 1:00 - 5:00 p.m.

Collection stations

WHERE TO FIND COLLECTION STATIONS

There are 11 collection stations in the Ortenaukreis:

Achern-Maiwald

Haslach im Kinzigtal, „Vulkan“

Kehl-Kork

Lahr-Sulz

Neuried-Altenheim

Oberkirch-Meisenbühl

Offenburg-Rammersweier

Ringsheim, „Kahlenberg“

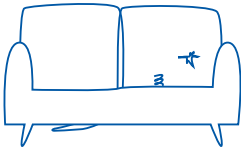
Schutterwald-Höfen

Schwanau-Ottenheim

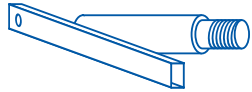
Seelbach-Schönberg

KIND OF WASTE TO DISPOSE OF THERE

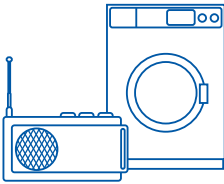
The collection stations accept all sorts of things for which you do not have a container at home or which are too big in size. The collection calendar lists the items which are accepted by each individual collection station.



Bulky waste



Metal waste



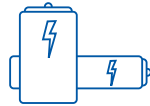
Electric appliances and electronic devices, cooling devices



Green waste, root stocks



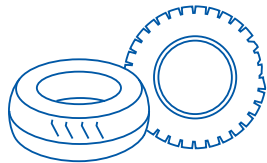
CD/DVD



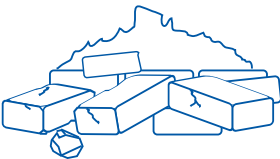
Household batteries



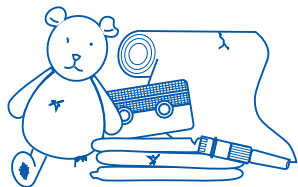
Wood waste



Old tyres



Construction rubble



Household waste

Landratsamt Ortenaukreis

Eigenbetrieb Abfallwirtschaft

Badstraße 20

77652 Offenburg

www.abfallwirtschaft-ortenaukreis.de

abfallwirtschaft@ortenaukreis.de

Advice by phone

Waste disposal consultancy 0781 805-9600

Waste collection fees and

waste containers 0781 805-6000

Monday to Wednesday: 8:30 – 12:00 a.m. and 2:00 – 4:00 p.m.

Thursday: 8:30 – 12:00 a.m. and 1:00 – 6:00 p.m.

Friday: 8:30 a.m. – 12:30 p.m.



Landratsamt Ortenaukreis

Abfallwirtschaft

Eigenbetrieb